



PANDA SCANNER ALL OVER THE WORLD

www.panda-scanner.com info@panda-scanner.com

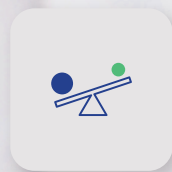
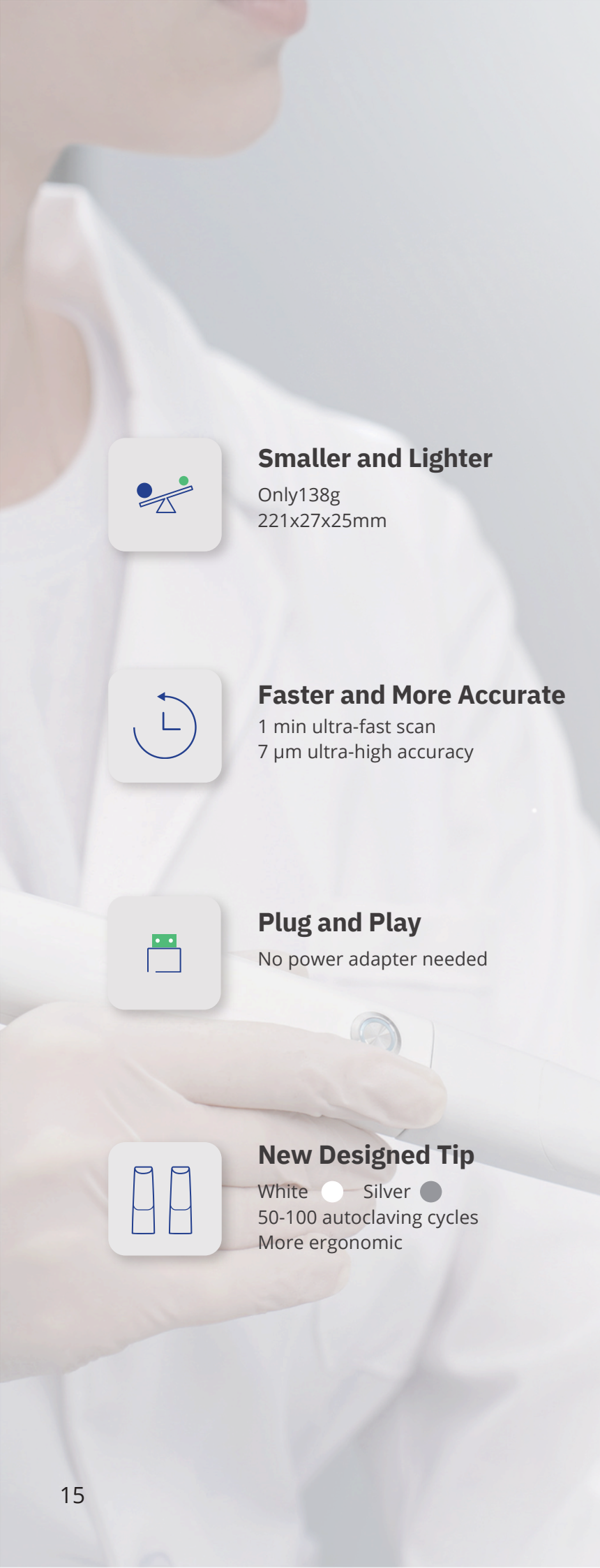
Chengdu | Ziyang | Suzhou | Ningbo | Hong Kong | Brazil | USA

PANDA smart 2026 Digital Intraoral Impression Device



## *Panda* Scanner

Usher in a New  
Era of Digital Dentistry



### Smaller and Lighter

Only 138g  
221x27x25mm



### Faster and More Accurate

1 min ultra-fast scan  
7 µm ultra-high accuracy



### Plug and Play

No power adapter needed



### New Designed Tip

White ● Silver ●  
50-100 autoclaving cycles  
More ergonomic



# New Collection

The art of intraoral scanners

- Crystal White
- Radiant Silver
- Sparkly Purple
- Ice Blue
- Lightsaber Red
- Champagne Gold
- Laguna Blue





### Silence Operating Process

Transforming your dental appointment into a calming and stress-free experience.



### One Button, Infinite Control

Control should be effortless, and innovation be intuitive. This design is aimed to simplify your interaction with products. With just a single press, you save the effort to point with a mouse.



### Motion Sensing

This innovative technology allows you to control your devices without any redundant touch, which provides you a hygienic operating environment.



### Anti-fogging Technology

Our innovative instant heating technology prevents the frustration of fogged lens.

**Ergonomic**  
**Efficient**  
**Innovative**

SMART





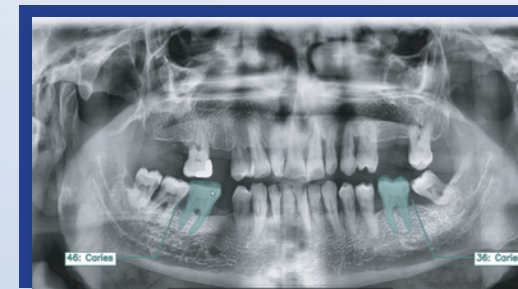
# SOFTWARE FEATURES

Smarter Scanning Starts Here



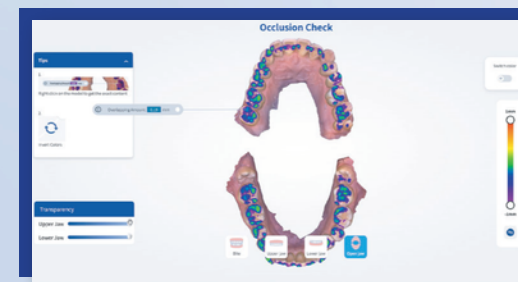
## AI Case Report

Automatically generate case report from intraoral scan data, enhancing digital workflows and improving doctor-patient communication.



## X-ray Assisted Analysis

AI-powered panoramic X-ray analysis highlights problematic teeth and conditions, simplifying diagnosis and improving consultation efficiency.



## Occlusion Check

Intelligently analyze scan data to assist occlusion evaluation, improving clinical preparation and data acquisition quality from the source.



## Model Maker

Automatically generate model bases from scan data, streamlining model design and improving 3D printing efficiency.



## AI Temporary Crown Design

Automatically design temporary crown with AI, solving immediate restoration challenges effortlessly.

# SOFTWARE FEATURES



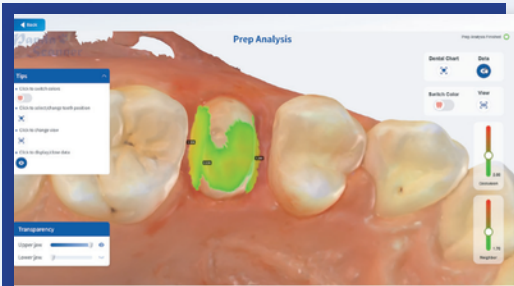
## Plaque Detection

Detect and visualize plaque distribution and severity to demonstrate treatment results and improve patient oral health awareness.



## Model Compare

Compare data across multiple visits, track treatment progress, and achieve full-cycle visual management.



## Tooth Preparation Analysis

Automatically measure tooth distances and prep volume, helping confirm space and streamline clinical procedures.



## Undercuts

AI-driven automatic calculation of the path of insertion, with one-click visualization of undercut range and depth, improving restoration success rate.



## Orthodontic Analysis

Automatically detect and visualize key orthodontic parameters to support treatment planning and improve correction outcomes.



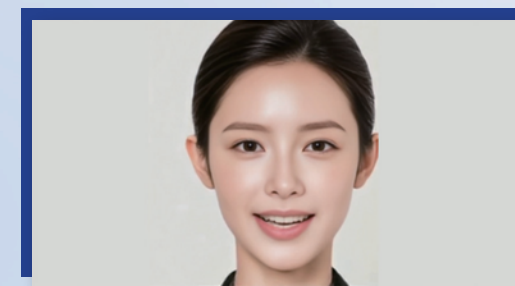
## Splint Design

Create custom occlusal splints with AI for faster production of sports guards, bite splints, and retainers.



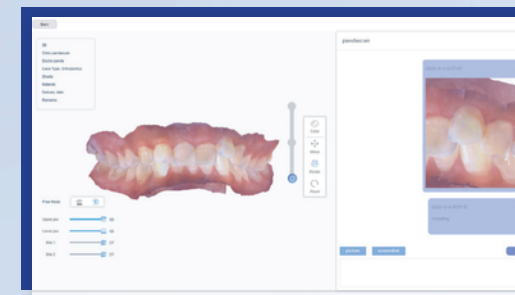
## Teeth Whitening

Automatically whiten teeth from photos to visualize treatment outcomes and support doctor-patient communication.



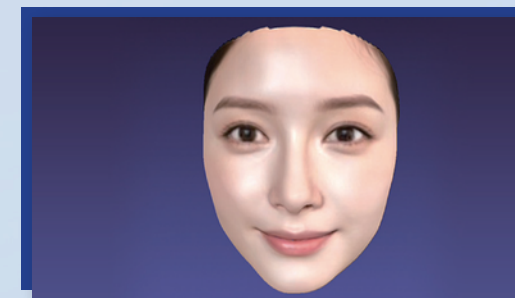
## Panda DSD

AI-generated smile design-Preview aesthetic restoration results in advance.



## Case Interaction

Seamlessly link orders and chats for efficient clinical-to-lab collaboration on each case.



## 3D Face Reconstruction

Automatically generates 3D facial models from photos for dentofacial design reference.

# APPLICATIONS



Data Acquisition



CAD - Implant Surgery Planning



3D Guide Printing



Dental Implant



Secondary Data Acquisition



Make Dental Crowns



Fitting Crowns



Data Acquisition



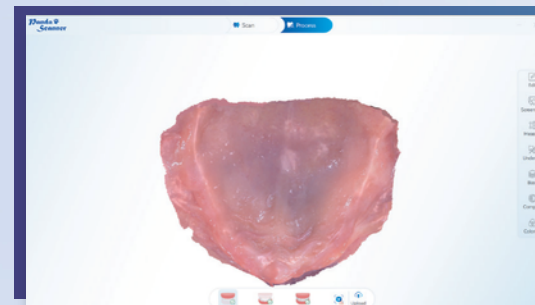
CAD - Restoration Design



CAM - Crown Milling - Wear Crowns



Fitting Dentures



Data Acquisition



CAD - Orthodontic Plan



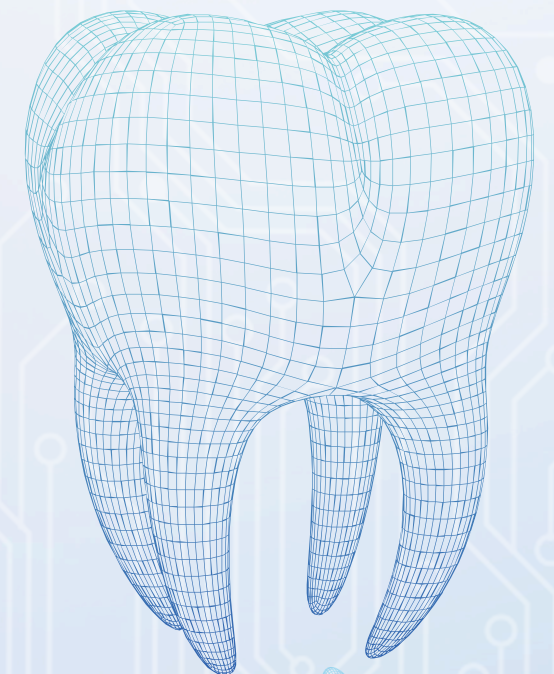
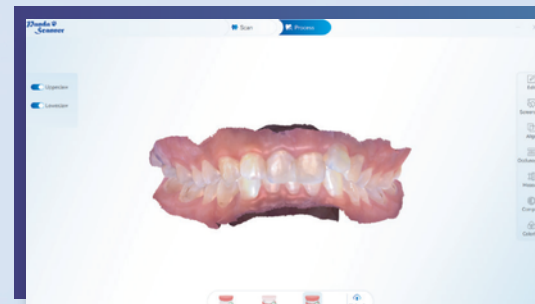
3D Model Printing



Make Aligners



Fitting Aligners



Intelligent Impressions  
for a Smarter Future



# SPECIFICATIONS

## PRODUCT INFORMATION

Category	PANDA smart
Anti Fog System	Intelligent Heating
Accuracy	≤7μm
Precision	≤5μm
Handpiece Weight	138g (192g with cable)
Handpiece Dimension	221x27x25mm
Handpiece Enclosure	High-strength Aviation Aluminum Alloy
Scan Field	18x16mm
Scan Depth	0-23mm
True Color	Full HD
Tips	x6 (Autoclavable)
Tip Autoclave Cycle	50-100 Times
Data Interface	USB3.0
Cable Length (m)	1.85m

# SOFTWARE

Category	PANDA smart
Types of Scanning	Orthodontics, Implant, Restoration
Image Capture	Yes
3D Data Preview	Yes
Output Files	STL, PLY, PTY (Encrypted for user)
Cloud Service	Yes
Cloud Service Price	5GB/Free
Direct Compatibility with Dental CAD	Exocad*
Main Image Processing Tools	Trim/Edit/Recover/Lock, etc.
Margin Line Drawing	Yes
Occlusal Match	Yes
Undercut	Yes
Data Comparison	Yes
AI Technology	Auto Tissue Remove, Overlap Correct, etc.
Software License	Free
Software Upgrade	Free
Transfer Data with API	Available

\*All names, logos, brands and other trademarks featured or referred to within this brochure are the property of their respective trademark holders.

# PC REQUIREMENTS

Category	PANDA smart
CPU	Intel i7-12700H/Intel i7-11800H or above
RAM	16G/32G
Hard Disk	SSD 512G or above
GPU	RTX2060/RTX3060 or above
Operating System	Windows10/11 64bit
Display	Resolution 1920×1080 and above

\*Check the PC Recommendation Catalog on our website for more detail.



# CONTACTO

Phone Number: +34 919 93 23 46

Whatsapp: +34 611 77 58 20

Email: [contacto@ekidex.com](mailto:contacto@ekidex.com)

*Panda* 🐾  
*Scanner*

